



Selected borehole logging projects

- **Germany** – Gravity Power project in Bavaria. Engineering geological rock classification, geotechnical core survey, lithological interpretation, determination of mechanical and hydrogeological rock properties.
- **Germany** – Inspection of risers and sounding pipes up to 1500m depth in old coal shafts. Camera inspection, exploration of corrosion sites and wall thickness measurement.
- **Germany** – Fact-finding survey Asse. Borehole magnetic and gyro measurements for the exploration of underground storage chambers.
- **Belgium** – Investigations of a 36 years old geothermal water well in Heerenthal. Control of the construction, hydrogeological tests, water sampling and environmental measurements.
- **Kazakhstan** – Exploration of vertical and up to 60° inclined open holes in a gold deposit. Geotechnical investigation, geology, ore horizons and 3D modeling.
- **Hong Kong** – Measurements in horizontal open holes up to 1050 m. Exploration and determination of geotechnical rock parameters in volcanites and plutonites.

DMT GROUP

Excellence and innovation in everything we do – this is our claim as an independent, global engineering and consulting company in the construction, mining, plant and mechanical engineering sectors. DMT is the “Engineering & Natural Resources” division of the TÜV NORD GROUP.

Sustainable value creation for our clients is always the goal – knowledge, digitalization and internationalization are our success factors. To this end, we count on our 1,100 employees, 14 subsidiaries, 30 locations and 280 years of experience.

In infrastructure, civil engineering and mining, we are general planners and specialists. We implement system and individual solutions in every discipline and bundle competencies for consulting, engineering, tendering, implementation, monitoring, operation and refurbishment, ensuring planning and investment safety for our customers.

We call this engineering performance.

DMT

DMT GmbH & Co. KG
Civil & Mining Engineering
Am TÜV 1
45307 Essen
Germany
T +49 201 172-01
F +49 201 172-1880
cme@dmt-group.com
dmt-group.com



DIN EN ISO 9001
DIN EN ISO 14001
DIN ISO 45001

© Copyright DMT | All rights reserved | CME | 04.2023

DMT



Geophysical borehole measurements

Fields of application: Exploration, mining, repository design, geotechnics and hydrogeology

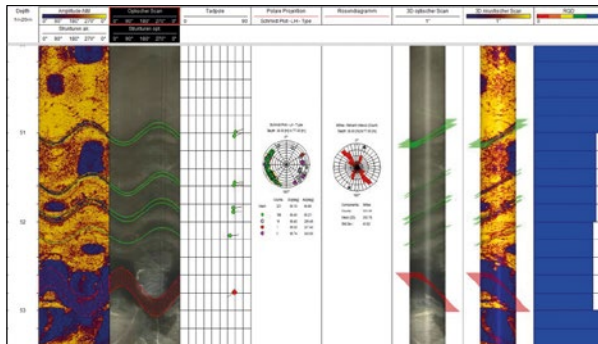
Civil & Mining Engineering
dmt-group.com

**Engineering
Performance**

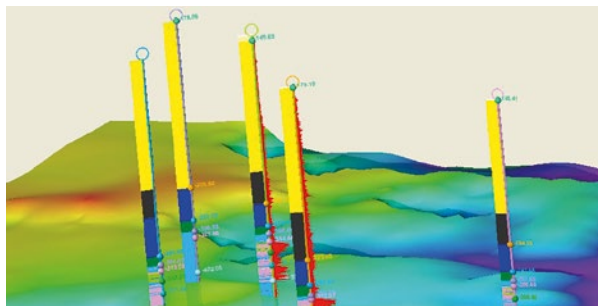
TÜVNORDGROUP

Our Services

- Geophysical borehole measurements up to 7000 m depth and 175 °C
- Optical and acoustic scan
- Progression measurement with magnetic and gyro sensor
- Electrical and electromagnetic measuring methods
- Oriented 3-, 4- and 6-arm Caliber Log
- Full-Wave-Sonic-Log
- Gamma-Density-Log
- Spectral-Gamma-Log
- INN method (impulse neutron-neutron) without permanently active source - also for explosive ordnance detection

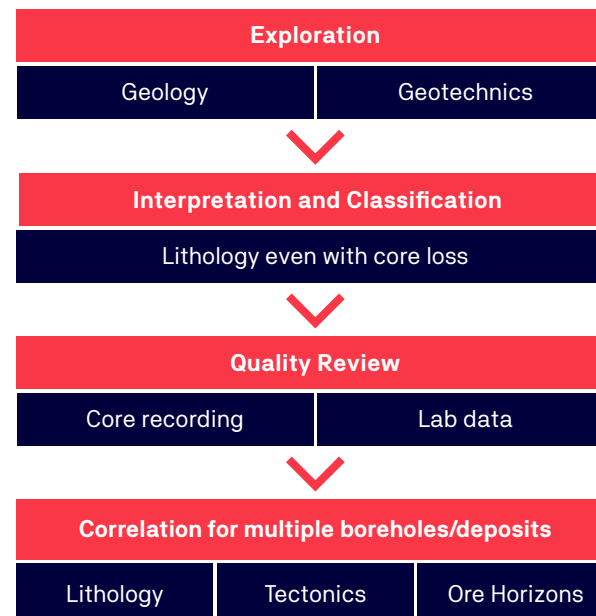
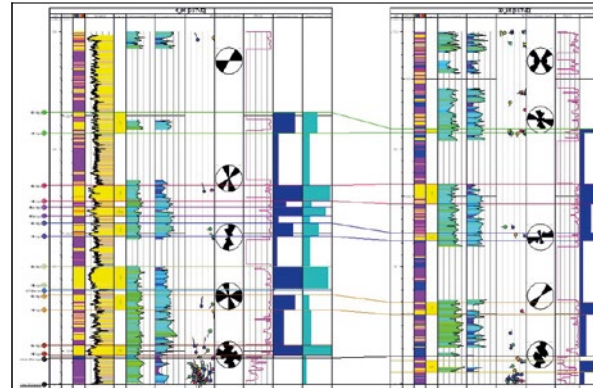


Acoustic & optical borehole scan, structure interpretation, display of the real collapse, 3D borehole display and RQD calculation



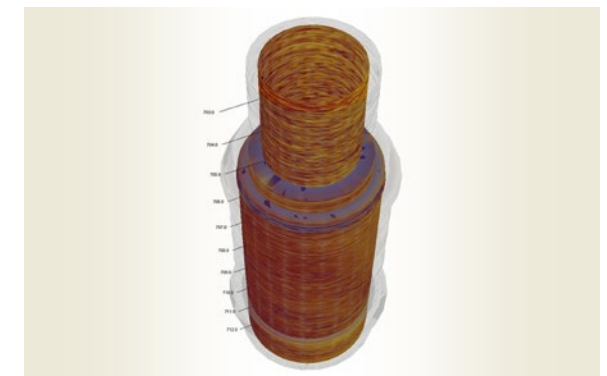
3D modelling taking into account all information from BLG, core images and laboratory results

Exploration, Geotechnics & Mining



Hydrogeology

Investigation / monitoring of drinking water wells and shafts	Hydrogeological and petrographic classification of layers
Inspection with high temperature camera	Magnetic Resonance-Method for identification of aquifers and aquitards
Expansion inspection for wells up to 175 °C	Inspection of ochre, corrosion, sedimentation zones and wall thickness in lining
Depth-oriented water sampling	Water quality analysis by milieu measurement



3D construction of a deep water level with different diameters – sensor used: acoustic borehole scan & calibre measurement